

A R C H I T E C T
M U H E E B K A S S A W A T

A stylized, cursive signature in white ink, consisting of the letters 'mk' with long horizontal flourishes extending to the left and right.



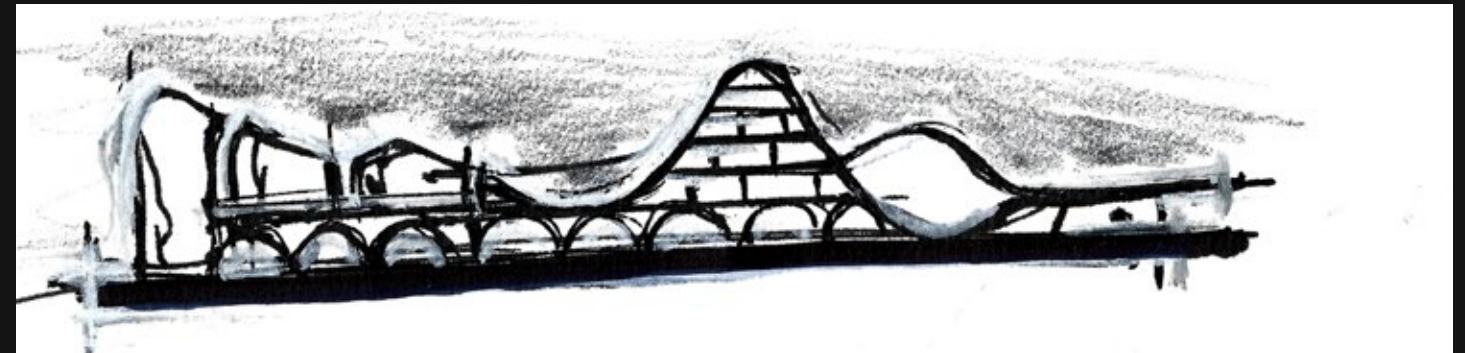
**IS ALWAYS OUR
SLOGAN AS WE
CAN'T RUN OUT
OF OPTIONS
AND SOLUTIONS
TO GIVE HUMANITY**

WHAT WE DO

ARCHITECTURE

To Believing that the we are composing a silent symphony is a start point in every project or idea Simplifying the architectural equation to be solvable as it isn't just a project has to be done but a formula of many elements that is connected and effecting each other, starting from environment to the function with an eye firmly fixed to the surrounding.

Listening to every need, maters and issues that is provided to cover and overcome then present this formula to be the new born child of our realm.



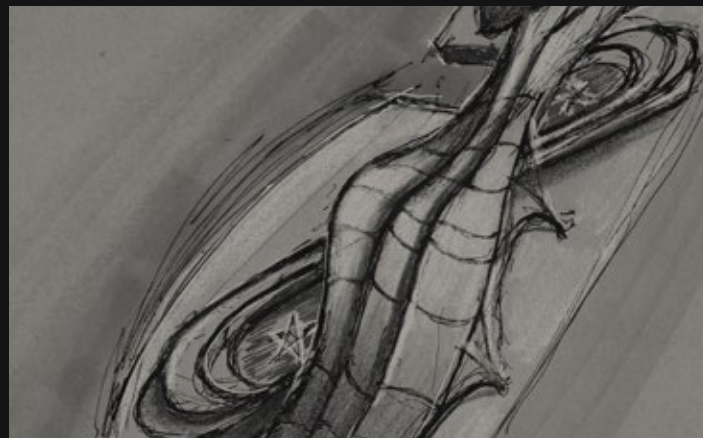
INTERIOR DESIGN

The inner spaces is where the personality of each individual are interacted and revealed it's qualities, been so a convenient space is a necessity not a privilege as it differ from person to person.

The intense observation of the people and their behaviors gives a lots of whom they are and what is suitable for them and what is wrong doing to be done.

URBAN DESIGN

A question has always been always applied (what makes cities design functional and oriental ?)
Answering this question took twenty years of deep study and observation for the current state of the countless cases and the obstacles or pros that facing them allowing us to come up with deferent approach of defining what is urban design or what city need to be. A place for every one to build his dream, feel safe to raise his family to walk at night knowing what is waiting for him



CONCEPTS & ARTWORK

Every idea is a spacial one as it has an unique character, boundaries and form, but like anything it needs nurturing and care to grow and start giving, to be an add value otherwise let it stay on paper until the right time for it shine.

Art can't be bound to anything as everything is a craft and every craft has a master who sees it as an art need to be perfected.

We extend our hands to everyone who appreciate uniqueness and singularity as we are speaking the same tongue although we are so far apart.

And always remember that you always have the choice to change by adapting the (what if) thinking.

A stylized, handwritten signature or logo in white ink on a blue background. The signature is fluid and cursive, with a long horizontal line extending to the left.



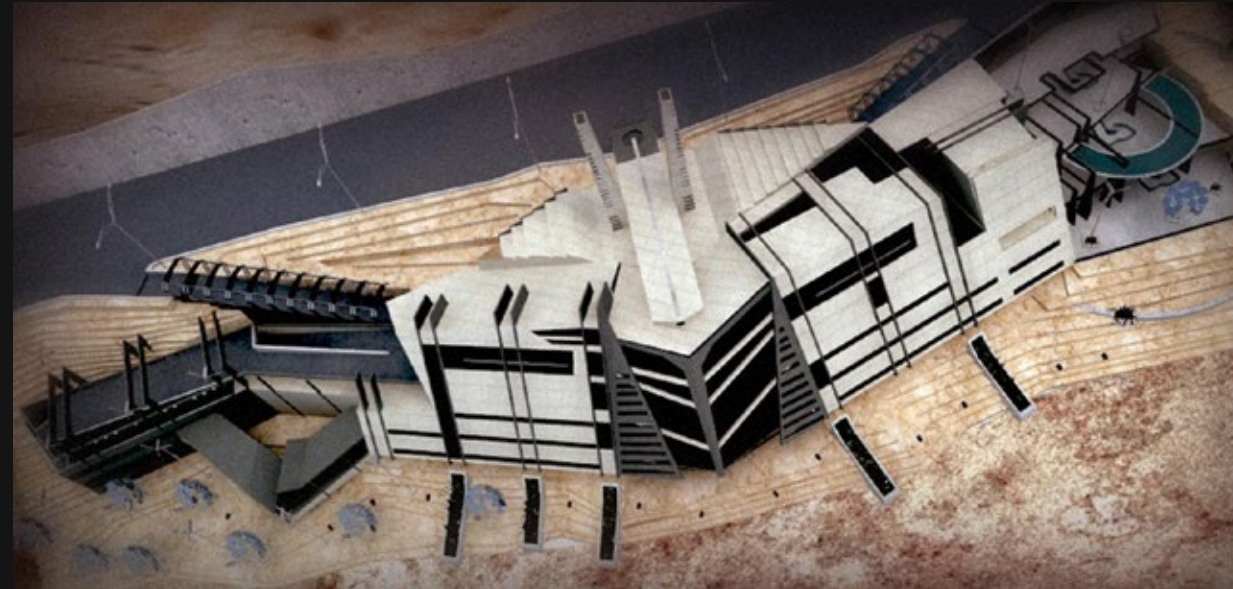
PROJECTS

GRADUATION PROJECT

2007

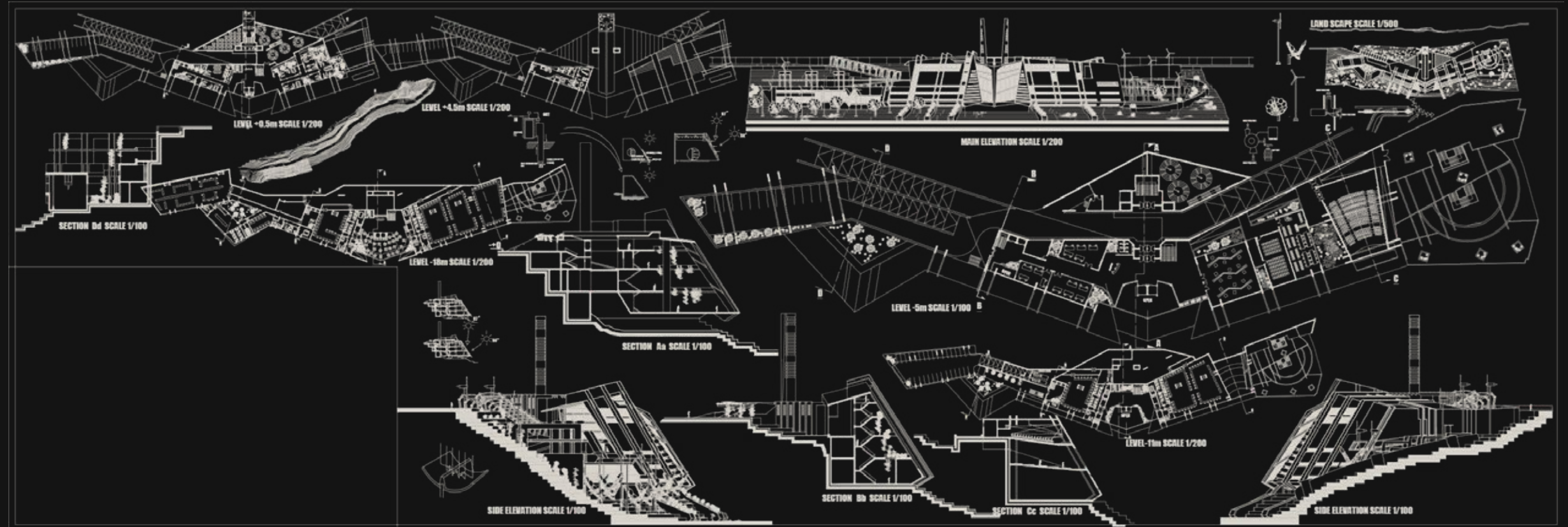
This was my graduation project back in 2007, as I chose a mountain slope of 85% in Qassion Mountain. The height was 950m above sea level, and because of the southern wind that domain the area and the position of the mountain in the north of the great city of Damascus, the polluted air condensed because of this barrier. So, I put the project in this area and invented a method that can get read of the polluted air and also produce electricity using simple physics. Also, I add a solar power panel and an air fan.

The architectural concept was taken from combining many ideas, such as the butterfly effect, systematic chaos, and the DNA formula.



I insist that the elevations must be simply designed because of the wild shape of the mass, and also, I made sure the side elevation must look like an angry face looking at the city.

pumps are inline and no external source due to misalignment, results in cause for wear/ vibrations

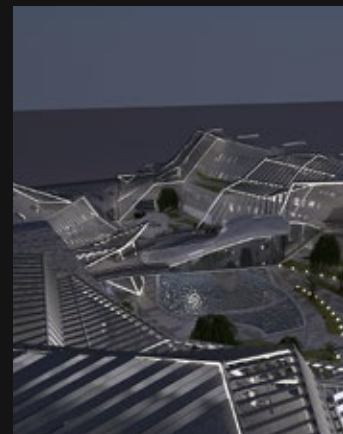
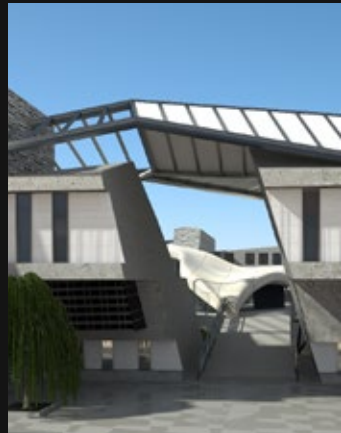


STREAM COMPOUND

2014

This is the first project I joined the Al-Saudi Consult with. Stream compound's idea came from the fact of the river effect on its cliffs and placed the facilities in the stream as on the cliff the residential apartment, villa, and studio. Also, using geo-thermal to control the outdoor environment was one of the many methods we used in this project. The area we worked on where 80*250 m, and it is flexible as the ratio has existed.

The inner spaces are also flexible as the construction module has been laid to assist the function.



PROSTRATION MOSQUE RIYADH

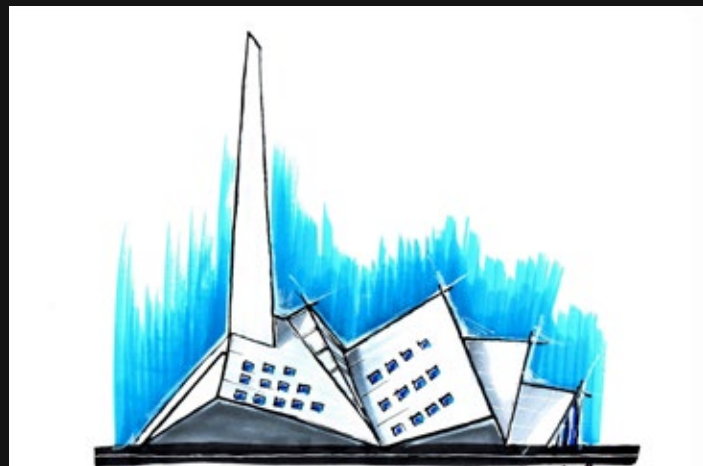
2014

One of the concept designs I done with ALSaudi Consult back in 2014 where and one of the great experience I done. Islam as one of the divine religions has his own practices and one of them is prostration where the human body shaped and gathered on the surface of the ground a sign for god obedience.

I took the cross-section of this act then dismantled it to fit the purpose of the function using folded architecture to obtain explicit and non-complicated shape.

Using folded architecture assist the needs for open plan free of columns and made it possible for the worshipers to see the Imam who is leading the prayers.

The mosque is centered a circle platform contains fountains and green areas after a long white stairway symbolize the after death and preparing the worshiper to join their god in heaven the afterlife they promised to have.



AL RASS MOSQUE ALQASSIM

2015

One of the project I designed with AlSaudi Consult back in 2015 .The Rass mosque idea came from the core religion of Islam as one of the holly verses says: and we made you levels and steps one above the other as well as your good work and kindness behavior.

And from this the elevation came in to binning as we human feel a pattern in life where we are spiritually connected to a higher power and sometimes we don't, I sampled this patterns as a windows where faith and hope enter the soul of the believers until believe is solidify and settle.



So it became clear as clear glass that when he takes the first jump to the levels where everything is connected and stable until the believer take the next jump to the mastery and faith.



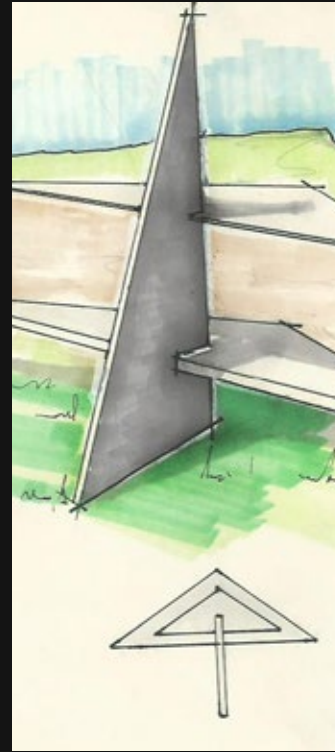
SKAKA LANDSCAPE

2015

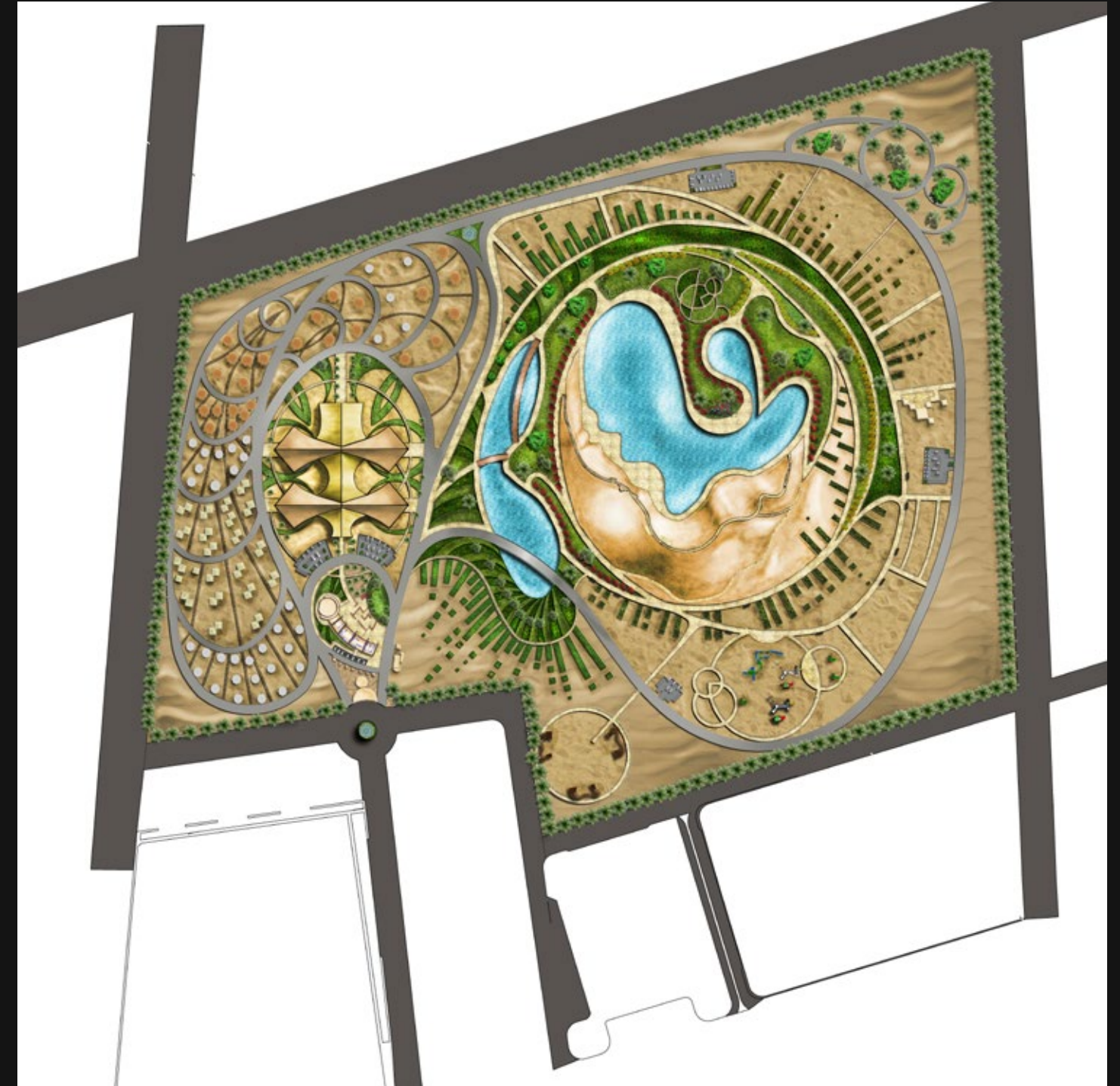
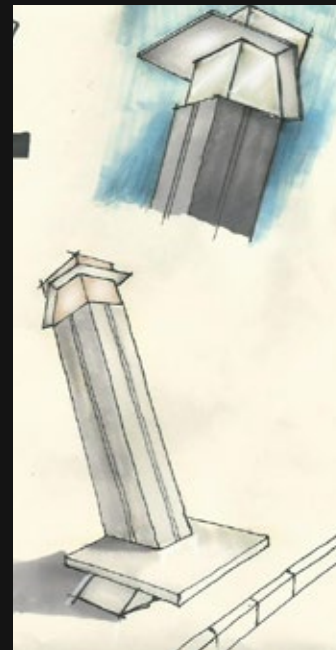
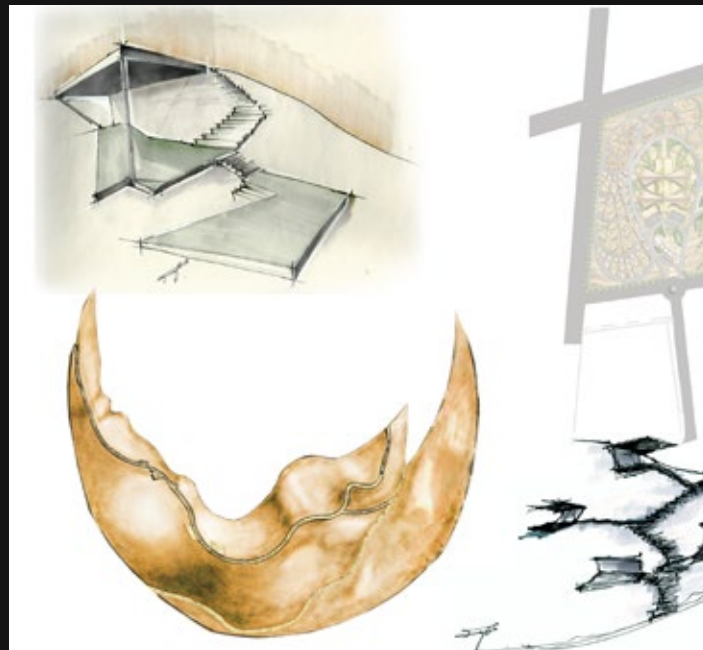
This project size is 500 KM2 in the middle of the Arabian Desert where an oasis has merged from the torrent from the rain. I used that oasis to submit the hard dry environment of the desert to resolve a moderate environment which is livable and enjoyable. The concept came from the brain cross-section as the pituitary gland is the oasis surrounded by the green area which irrigate by its water.

The sand hill that is adjacent to the oasis has prepared with concrete platform so it can act as a seating area that overview the area.

The central area contained few facilities such as restaurant, path through cafés and a tent for holding occasions.



The site is prepared with paved roads using rocks and dirt that suit the experience and the environment we created.



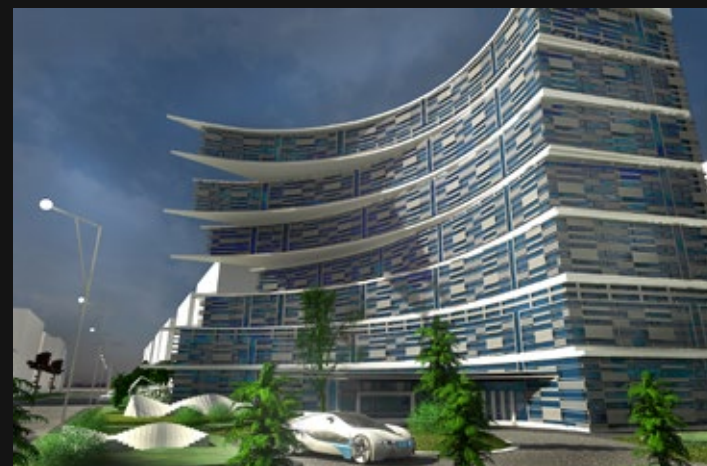
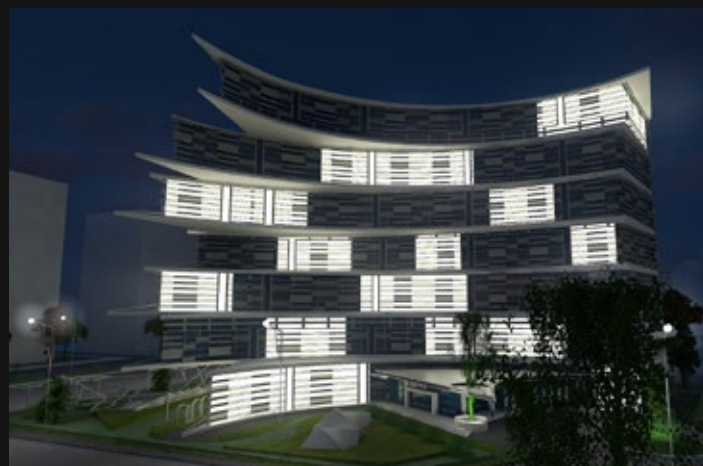
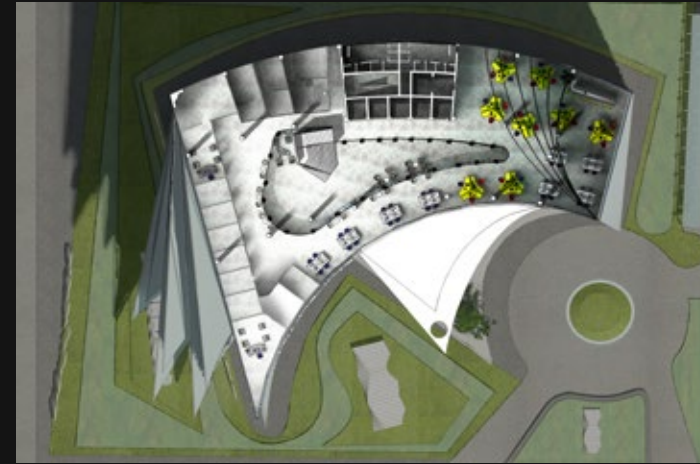
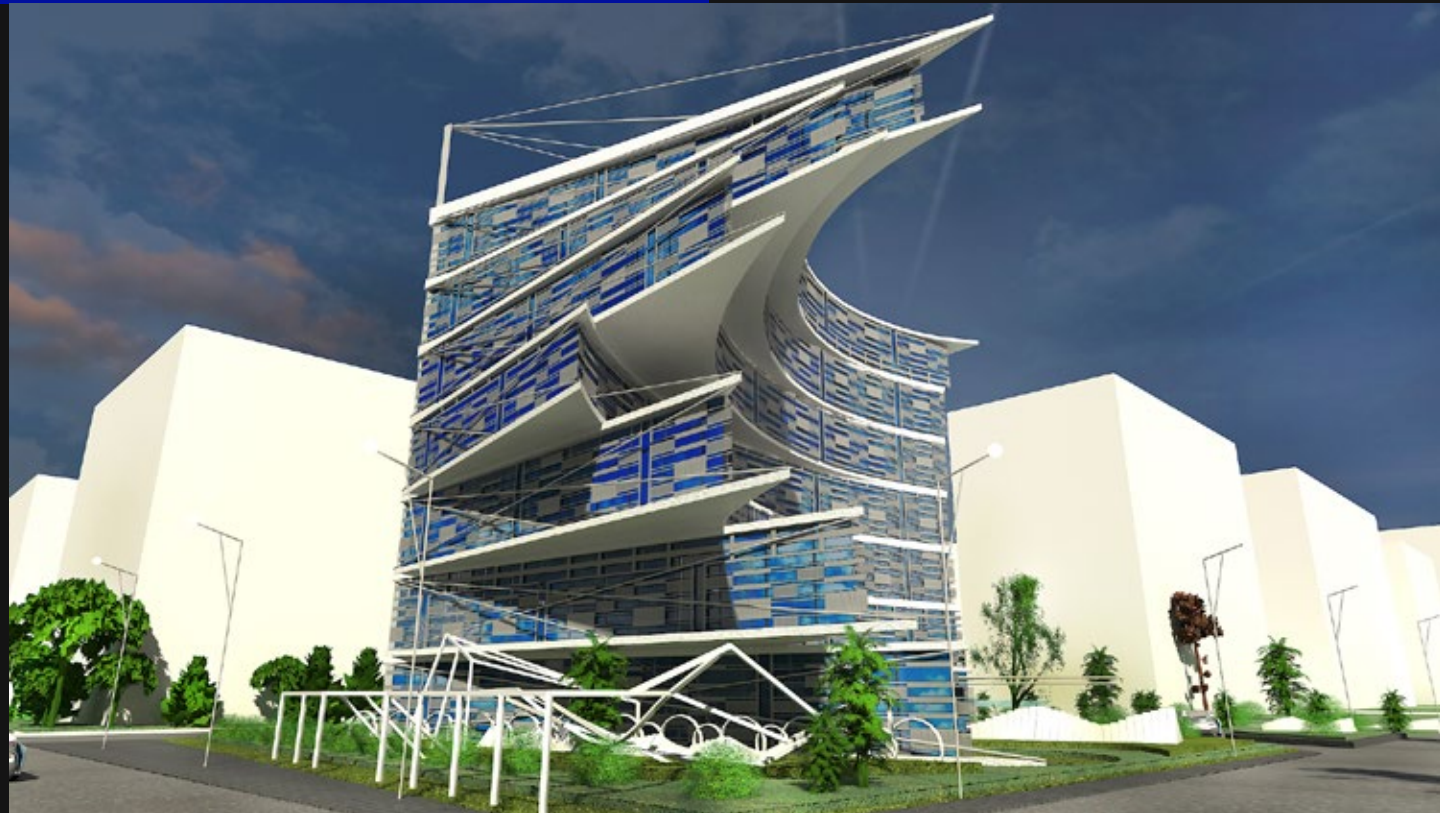
ABHA RECREATION CENTER

20??



COMMERCIAL BUILDING THE LONG CLOW

2015



THE DELTA TOWER HOTEL

Jeddah

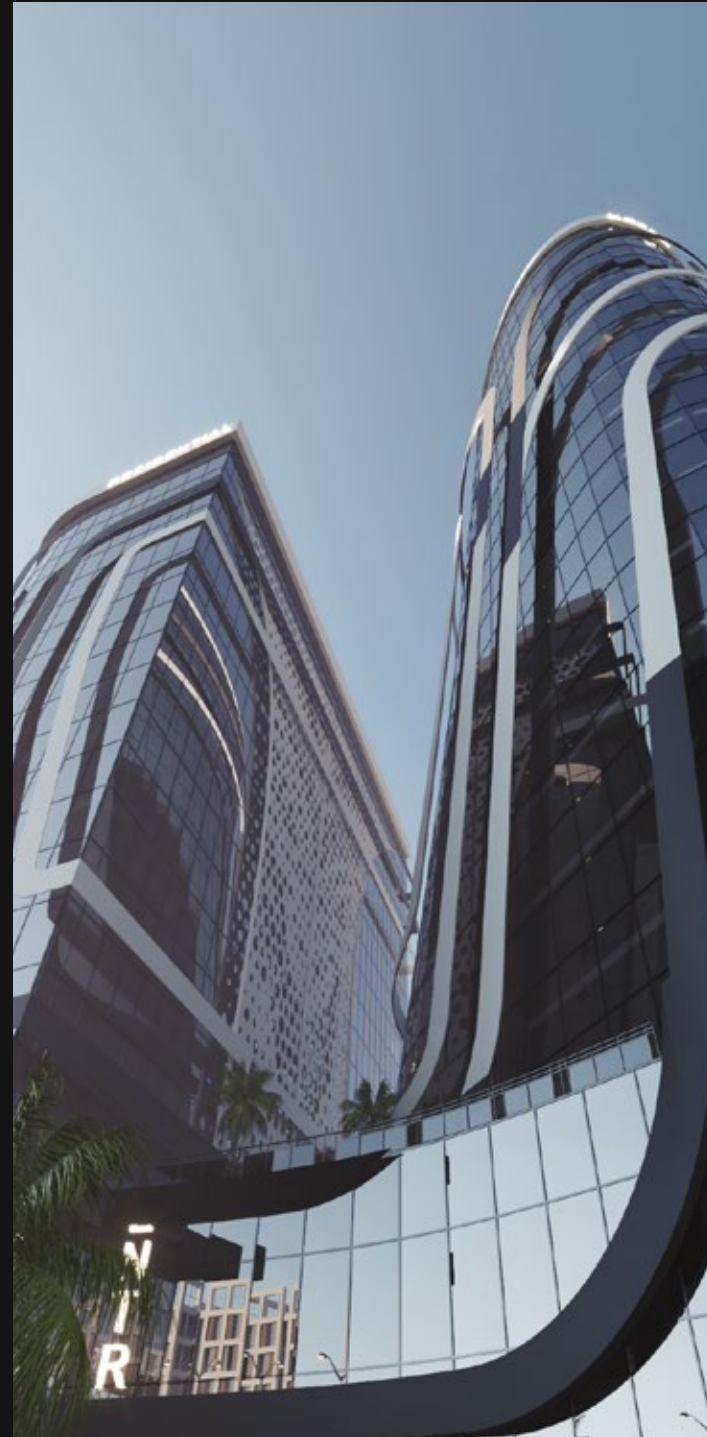
In one of the main arteries of Jeddah city in SAUDIA, this project is designed to be a five stars hotel of 20k m2 of 18 levels, including a shopping mall for the first two floors.



THE VALLEY TOWER

Riyadh

An unmatched twin tower located in one of the main artery roads of Riyadh, SAUDIA, a hotel of 45k m2 area that has a commercial mall connecting the two towers and acts as a base for them.

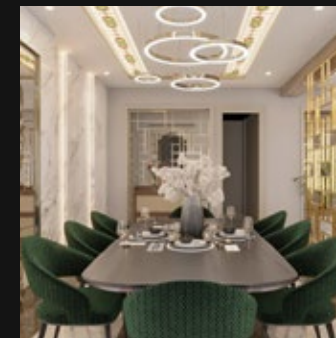
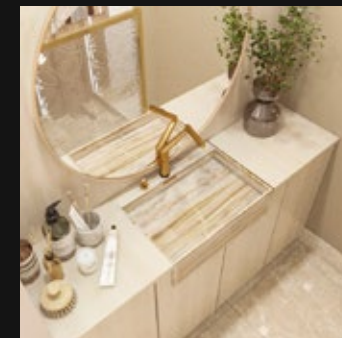
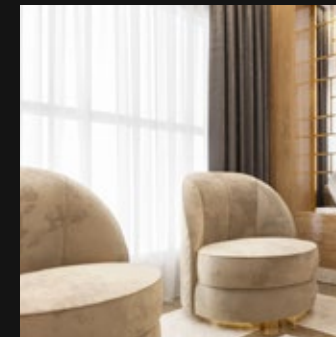
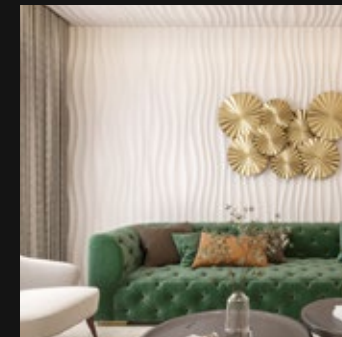


A RESIDENTIAL PROJECT

Turkey

Is executing in the near city of Bursa Turkey. The land location is so special that has a view can only defined as majestic with a touch of eternity.

The project has a unique slope of 66 m from the lowest point to the top with a panoramic view for the Oluda mountains, A 13 plot of land that has nothing in common but the view Also the city regulations for those is so strict that only 7.5% from the area are allowed for building above the ground.



OUR SUCCESS PARTNERS



**THANK
YOU**

mk

+90 553 866 46 66
mk@kaswat.com
www.kaswat.com